

Customer :

customer

Customer part :

customer part

Comment :

Comment

S1=7.94

S2=7.55

Tmax=455

Tp S2=494.0

PI=0.51

HI=117

Sample =1771.30

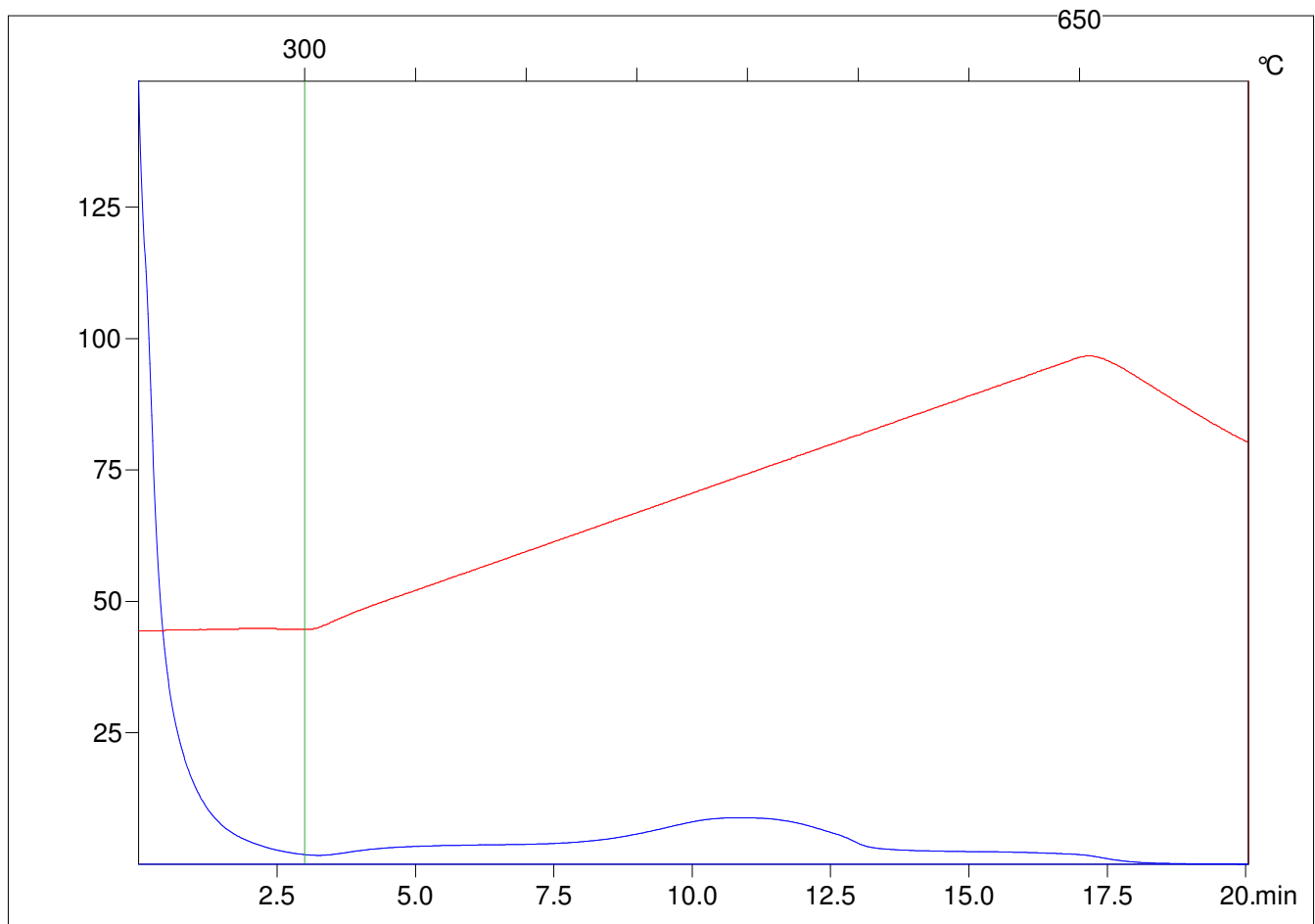
Method =Bulk Rock

Cycle=Basic

KFID(10\*9)=1444

Qty =71.0

TOC=6.46



C:\VINC\PK3\_1792\PK045.R00 : FID pyrolysis graphic

State

Pyro Status

Oxi Status